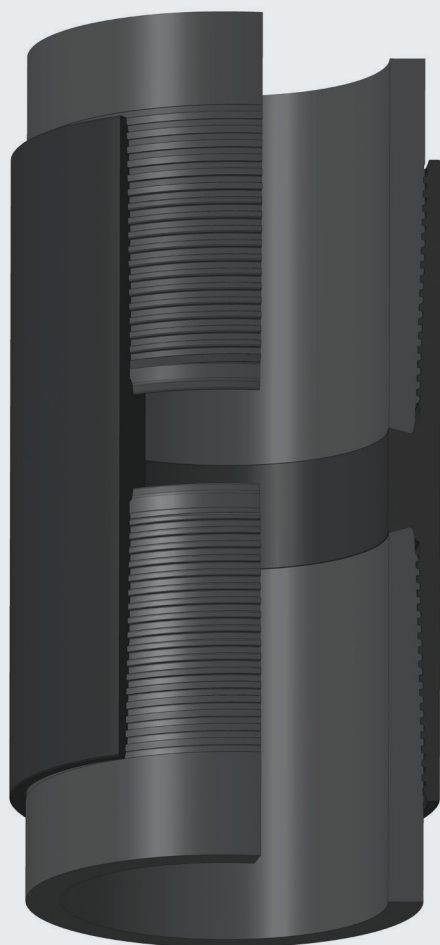


INTREPID M - CAL IV certified T&C Premium Connection

INTREPID-M is a proprietary premium connection certified in accordance with ISO 13679 for CAL IV requirement level.

This connection guarantees safe operation under severe pressure and temperature. It can withstand up to 100% tensile, compression, internal and external pressure loads.

Bending capability of the Intrepid M is up to 40° / 100 ft.



SIZE RANGE:
2 3/8" – 13 3/8"

INTREPID M MAIN FEATURES:

- Metal-to-Metal Seal
- "Hook" Thread Profile
- Up to 100% Efficiency on Tension, Compression, Internal & External capacity
- Dope Pocket
- "Dog Leg" up to 40° per 100 feet

APPLICATIONS:

- Vertical, deviated and horizontal wells
- Deep wells
- Intermediate and production casing
- Liners

OPTIONS:

- High Torque Modifications for extended reach wells
- Special Clearance
- Special Bevel

INTREPID M

Performance DATA

| Performance | | [UM] | 2 7/8 | 3 1/2 | 7 | 9 5/8 |
|-------------------------|--------------------------------|-----------|--------------|---------------|---------------|---------------|
| PIPE PROPERTIES | Nominal ID | in. | 2.441 | 2.922 | 6.184 | 8.535 |
| | Label / Wall Thickness | ppf / in. | #6.5 / 0.217 | #10.2 / 0.289 | #29.0 / 0.408 | #53.5 / 0.545 |
| CONNECTION PROPERTIES | Connection OD (nom) | in. | 3.228 | 3.965 | 7.638 | 10.551 |
| | Make-up Loss | in. | 2.520 | 3.031 | 4.724 | 5.512 |
| | Coupling Length | in. | 5.984 | 7.008 | 11.417 | 12.795 |
| | Tension Efficiency | % of pipe | 100 | 100 | 70 | 70 |
| | Compression Efficiency | % of pipe | 100 | 100 | 100 | 100 |
| CONNECTION PERFORMANCES | Tensile Yield Strength | klb | 199 | 321 | 929 | 1710 |
| | Compression Resistance | klb | 199 | 321 | 651 | 1197 |
| | Internal Yield Pressure | psi | 14 530 | 15 900 | 11 220 | 10 900 |
| | External Pressure Resistance | psi | 14 550 | 16 670 | 8 530 | 7 950 |
| | Max. Structural Bending, up to | °/100 ft | 40 | 40 | 40 | 40 |
| FIELD TORQUES | Min. Make-up torque | ft.lb | 1 850 | 3 540 | 10 400 | 20 870 |
| | Opti. Make-up torque | ft.lb | 2 060 | 3 910 | 11 580 | 23 160 |
| | Max. Make-up torque | ft.lb | 2 260 | 4 280 | 12 760 | 25 450 |

CONTACTS

Daniel Valk
Sales director
 Cell: +1 281 236 2949

North American Interpipe
 1800 West Loop South, Site 1350,
 Houston, Texas, 77027, USA
 Phone: +1 713 333 0333
 Fax: +1 713 333 0330
www.na.interpipe.biz
www.interpipe.biz